

# MONTHLY MEMBERSHIP PROGRESS REPORT

District 322 B1

Results as of: 5/31/2026

GMT:

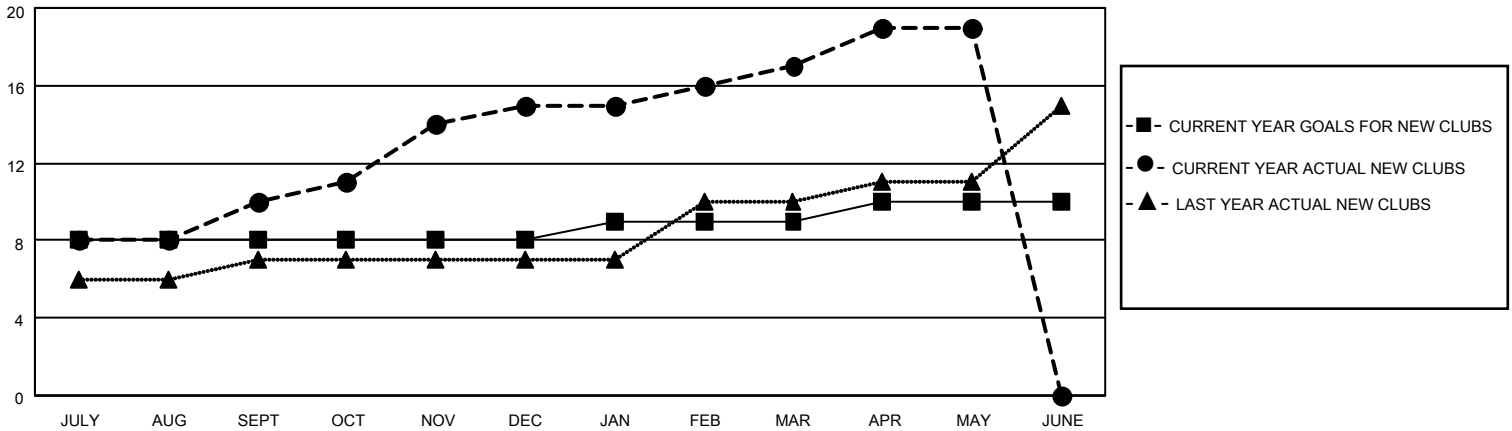
LOCATION INDIA

GMT CA

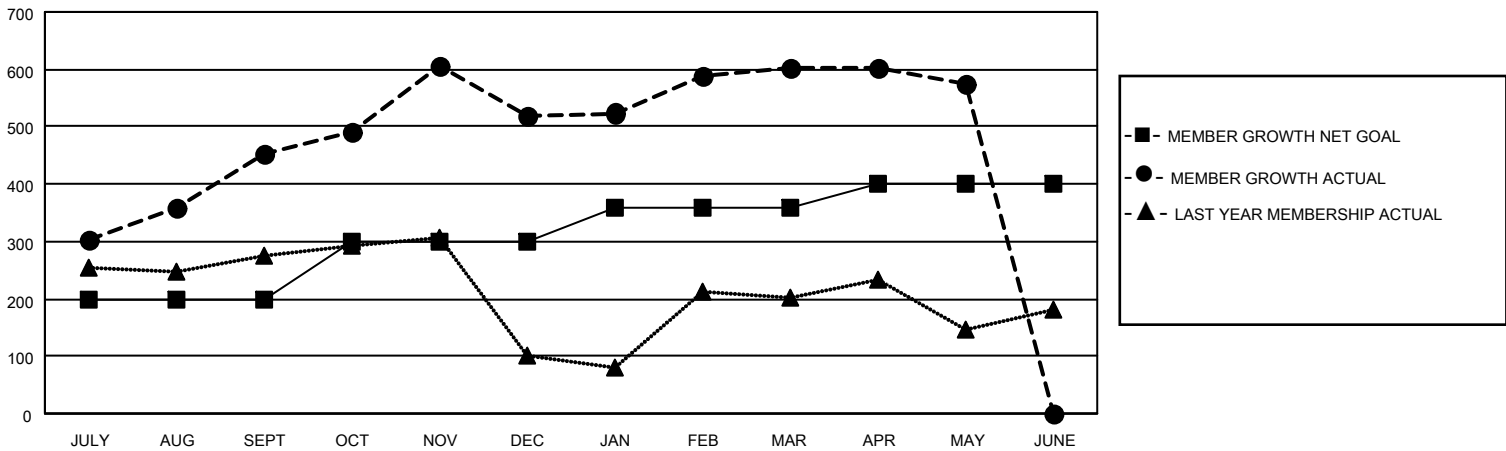
Clubs			
RESULTS FOR 2025-2026			
QUARTER	NEW CLUB GOAL	NEW CLUBS	DROPPED CLUBS
JULY/AUG/SEPT	8	10	2
OCT/NOV/DEC	0	5	2
JAN/FEB/MAR	1	2	0
APR/MAY/JUNE	1	2	0

Members			
RESULTS FOR 2025-2026			
QUARTER	MEMBER GROWTH NET GOAL	MEMBER GROWTH ACTUAL	DROPPED MEMBERS ACTUAL (including transfers)
JULY/AUG/SEPT	200	542	73
OCT/NOV/DEC	100	351	280
JAN/FEB/MAR	60	151	61
APR/MAY/JUNE	40	106	122

GOALS AND ACTUAL NEW CLUBS CUMULATIVE



GOALS AND ACTUAL MEMBERS CUMULATIVE



DROPPED CLUBS: 4	103 CLUBS OF 109 ADDED 1 OR MORE NEW MEMBERS	<u>GENDER DISTRIBUTION</u>	
<u>DROPPED MEMBERS</u>		MALE	3,062 (65.43%)
DECEASED	23	FEMALE	1,618 (34.57%)
CLUB CANCELLED	58	TOTAL FAMILY UNIT MEMBERS	
OTHER	454	2,071	
TOTAL	535	FAMILY MEMBERS PAYING HALF DUES	
		1,218	

[CLICK HERE FOR CUMULATIVE MEMBERSHIP DATA](#)